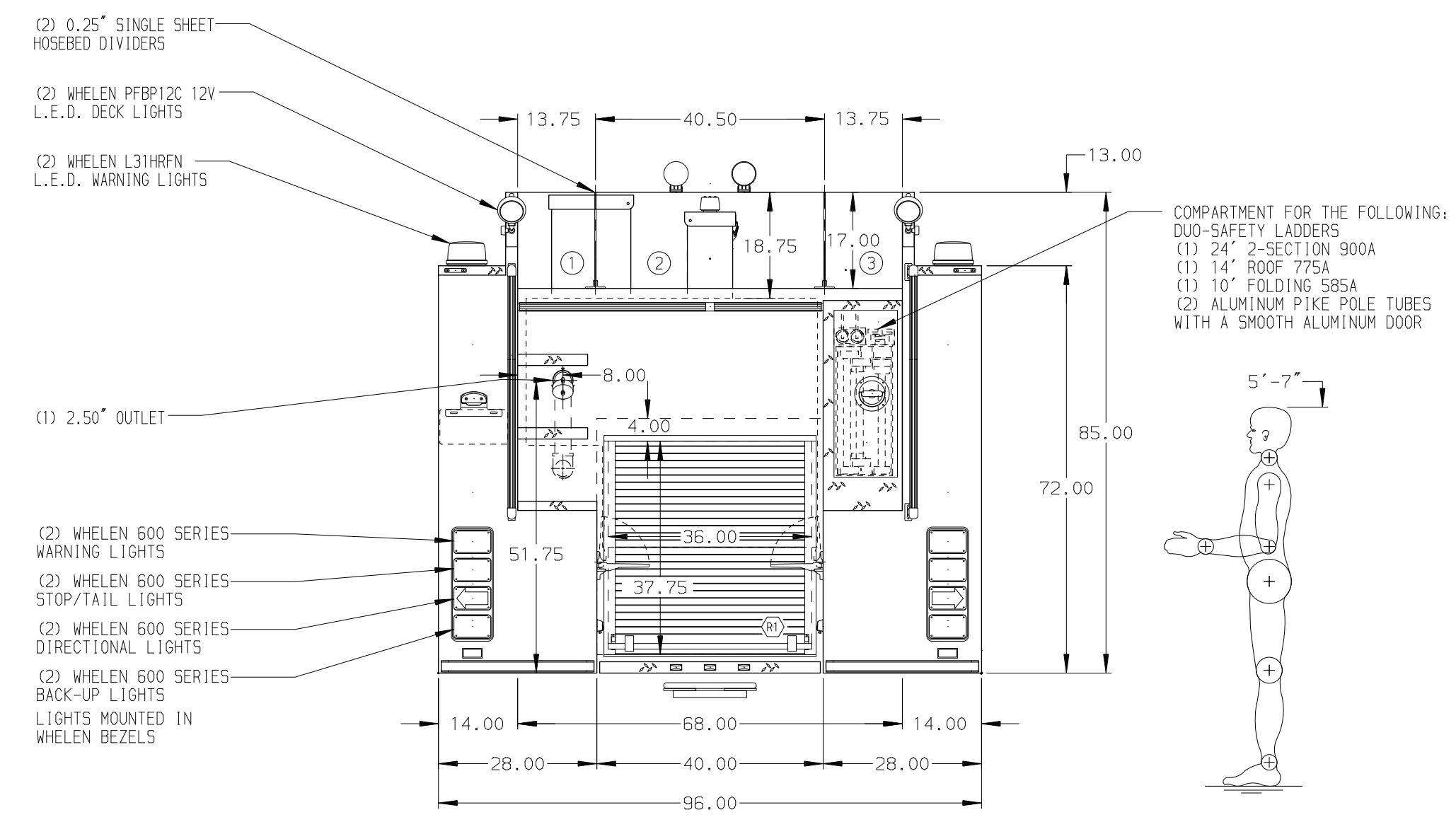
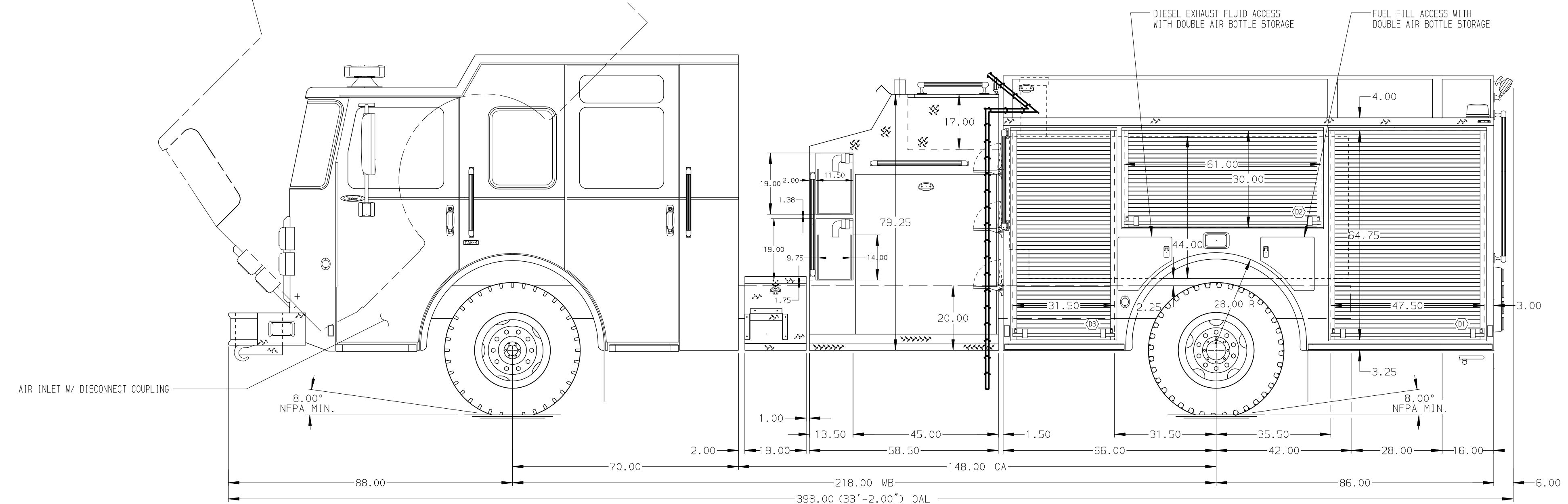


HOSEBED CAPACITIES

① 500' OF 2.50" D.J. HOSE

② 1000' OF 5.00" D.J. HOSE

③ 500' OF 2.50" D.J. HOSE



ALUMINUM BODY

NOTE  
DIMENSIONS SHOWN ARE APPROXIMATE AND ARE SUBJECT TO MINOR DEVIATIONS AS MAY OCCUR OR BE NECESSARY IN CONSTRUCTION. MINOR DETAILS NOT SHOWN.

		JOB NO.	30849
		SCALE	DATE
CHASSIS DATA MAKE PIERCE MODEL SABER FR	TITLE	1500-D-780P, 750 GAL WATER W/ 30 GAL FOAM SYSTEM 152" PUMPER BODY, TOP CONTROL, LADDERS BESIDE TANK	
	FOR	PIERCE FIELD UNIT BRADENTON, FLORIDA	
24JAN17 REV DATE	RWI BY	CAG CH	DRAWN BY RWI 11NOV16 CHECKED BY CAG 11NOV16 SHEET SIZE D SHEET NO. 1 OF 1
DWG NO.		30849AD	